

Nature. Community. Preserved.



Serosun Farms is a sustainable community that blends peaceful, pastoral living with modern convenience. Centered around a working farm, it is a progressive rural oasis that provides refuge from the city without sacrificing its comforts. Residents will enjoy hundreds of acres of open space with restored prairie and woodlands while staying connected through the latest technology and being pampered by a wide range of amenities.

Living

Residents of Serosun Farms will enjoy high-performance, custom homes with superior craftsmanship and breathtaking views that will endure for generations. Choices of homes interspersed among the community's 410 acres of rolling countryside include:

- 114 distinctive, 1-acre lots.
- A variety of architectural styles and sizes ranging from cottages to country estates.
- Sustainable development customizing the latest technology and green building practices to suit each homeowner's needs.

Serosun Farms is located south of Huntley, near the towns of Hampshire and Burlington in Kane County, IL. It is conveniently located near Interstate 90 and the intersections of Route 20 and 72.

About the Developer

The environmentally conscious developer behind Serosun Farms is John DeWald & Associates, a Real Estate Investment Consortium. JDA provides investors the opportunity to participate in a variety of unique and successful real estate ventures. JDA's portfolio is extremely diverse, including single-family homes, distinctive condominium properties and innovative mixed-use developments.

Sustainability

Serosun Farms is dedicated to implementing an environmentally sound, sustainable approach to living. Every element of the community - from the active agricultural operations, residential housing and equestrian center to the preservation and restoration of natural areas - is being developed with the following goals in mind:

- To provide 70-80% of energy through clean, renewable, on-site sources. Key energy sources on Serosun Farms include wind, solar and geothermal energy.
- To preserve, restore and maintain the quality of natural resources.
- To reduce the community's carbon footprint.
- To celebrate the natural beauty, spirit and agricultural history of the area.
- To provide a living example of sustainable development and land management.

Community

Serosun Farms enjoys a symbiotic relationship with its surroundings. Energy is drawn from natural resources, while eco friendly programs and practices prevent land degradation and restore natural areas. The community demonstrates that preservation can be both comfortable and refined; settings are natural and relaxed, with architectural significance that includes Prairie, Victorian, and Craftsman style homes. Serosun's unique combination of advanced conservation techniques and luxury living is unrivaled, and sets a new standard for sustainable communities.

Serosun Farms is...

sustainable luxury.



Live Life in Balance

Serosun Farms is an innovative conservation community situated on over 400 acres of picturesque countryside, 50 miles west of downtown Chicago. Its graceful combination of agricultural preservation and sustainable living with modern luxury and architectural significance offers homeowners a rare blend of rural charm and high-performance homes with every modern amenity.

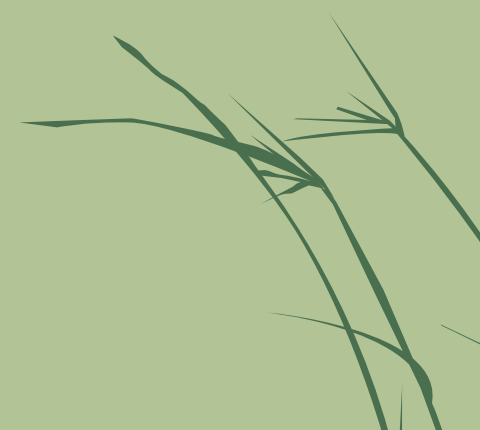
Serosun Farms is...

rural living, redefined.



Bring Your Home To Life, Naturally

300 acres of preserved farmland and restored prairie with walking trails, fishing ponds and a world-class equestrian center provide a beautifully maintained pastoral setting for the homes that will reside within the community. Lots consist of approximately one acre of land, and every home will be personalized to perfection. Whether you envision a country cottage, a traditional farmhouse or a sprawling estate, our award-winning development team will incorporate your life and style into your property, and ensure that your dream home becomes a reality.

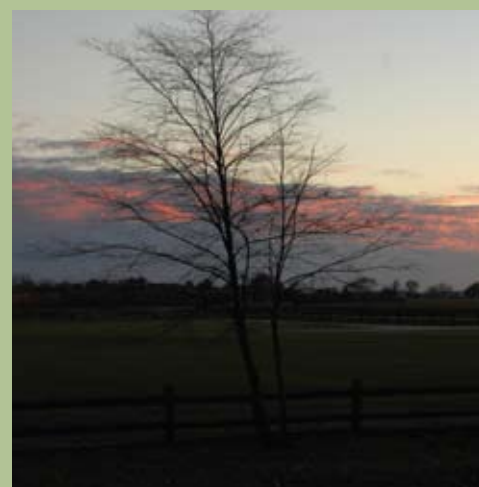


Serosun Farms is...

convenience in an idyllic setting.

Enjoy the Serosun Farms Lifestyle

Serosun Farms is a vibrant community with a wealth of amenities. A 160-acre working organic farm will supply an on-site farmer's market featuring fresh produce, flowers, farm-raised meat and a variety of specialty items. 300 acres of open countryside with eight miles of trails provide a stunning backdrop for recreational activities along with sports facilities, an equestrian center, fishing ponds, a playground and a community center with a swimming pool, a game room and event facilities. A variety of fine dining, entertainment and shopping venues are minutes away in nearby St. Charles and Geneva, and Interstate 90 gives convenient access to everything Chicago has to offer.





*Serosun Farms brings
nature to your doorstep
with stunning views,
idyllic landscapes
and a peaceful,
pastoral setting.*

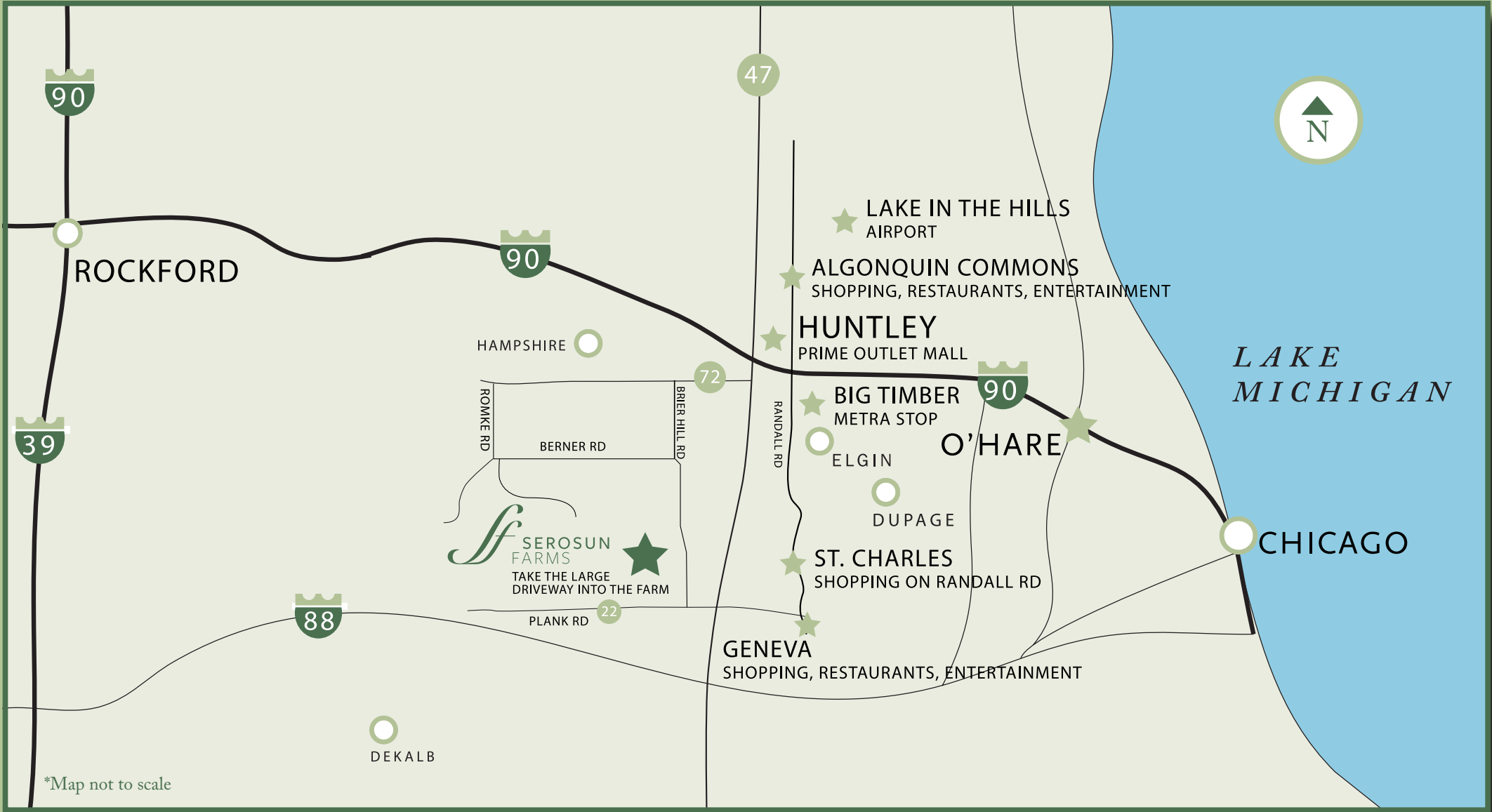




*Farm-fresh foods and
a wealth of activities enrich
active, healthy lives
at Serosun Farms.
Award-winning dining,
shopping, entertainment
and arts venues are only
an hour away in
downtown Chicago.*



Our Location



Serosun Farms is located south of Huntley near the towns of Hampshire and Burlington in Kane County, IL.
It's conveniently located near Interstate 90 and the intersections of Route 20 and 72.

Easy access from I-90 and Metra stations to O'Hare and Chicago. Nearby shopping and dining in Huntley, Geneva and St. Charles.