

THE DIFFERENCE BETWEEN LIVING  
& *Living Artfully* - 65 Dune Road



B





*65 DUNE ROAD IS  
A CONTEMPORARY  
WORK OF ART  
CAPITALIZING ON  
SPECTACULAR  
OCEAN AND BAY  
VIEWS AND SLEEK,  
THOUGHTFULLY  
DESIGNED LIVING  
SPACES*



GORGEOUS TURQUOISE BLUES OF THE OCEAN BLEND  
SEAMLESSLY WITH THE HORIZON







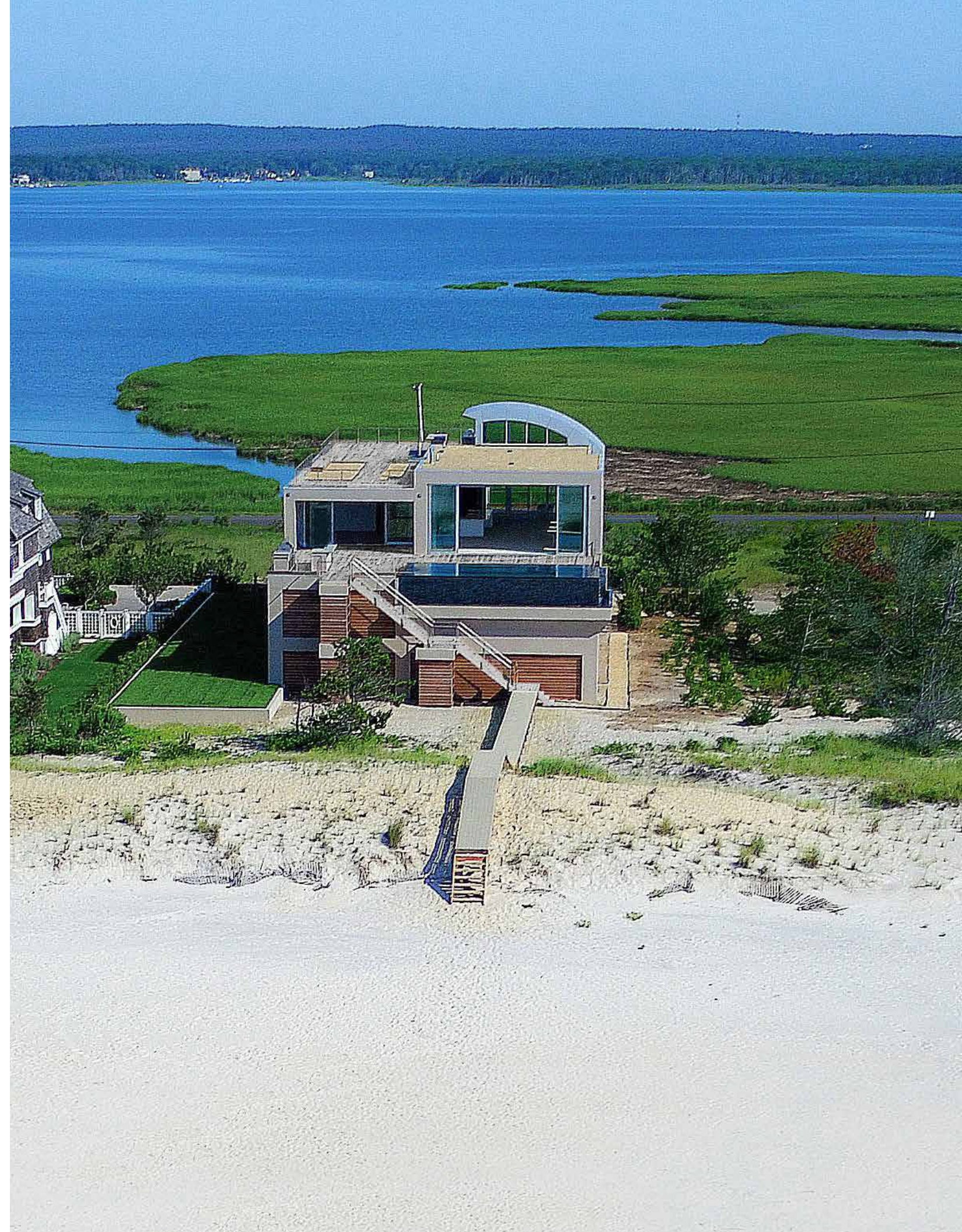
A MODERN MARVEL  
HAS RISEN IN A HAMPTONS  
DREAM OCEANFRONT LOCALE

---



THIS NEWLY-COMPLETED, ONE-OF-A-KIND 9,300 SF+/-  
SHOWPLACE PERCHED HIGH ABOVE THE DUNES SITS  
ON A SUPREME 1.36-ACRE ELEVATED OCEANFRONT  
LOT ON PRIZED DUNE ROAD, NESTLED BETWEEN THE  
ATLANTIC OCEAN AND SHINNECOCK BAY.

---



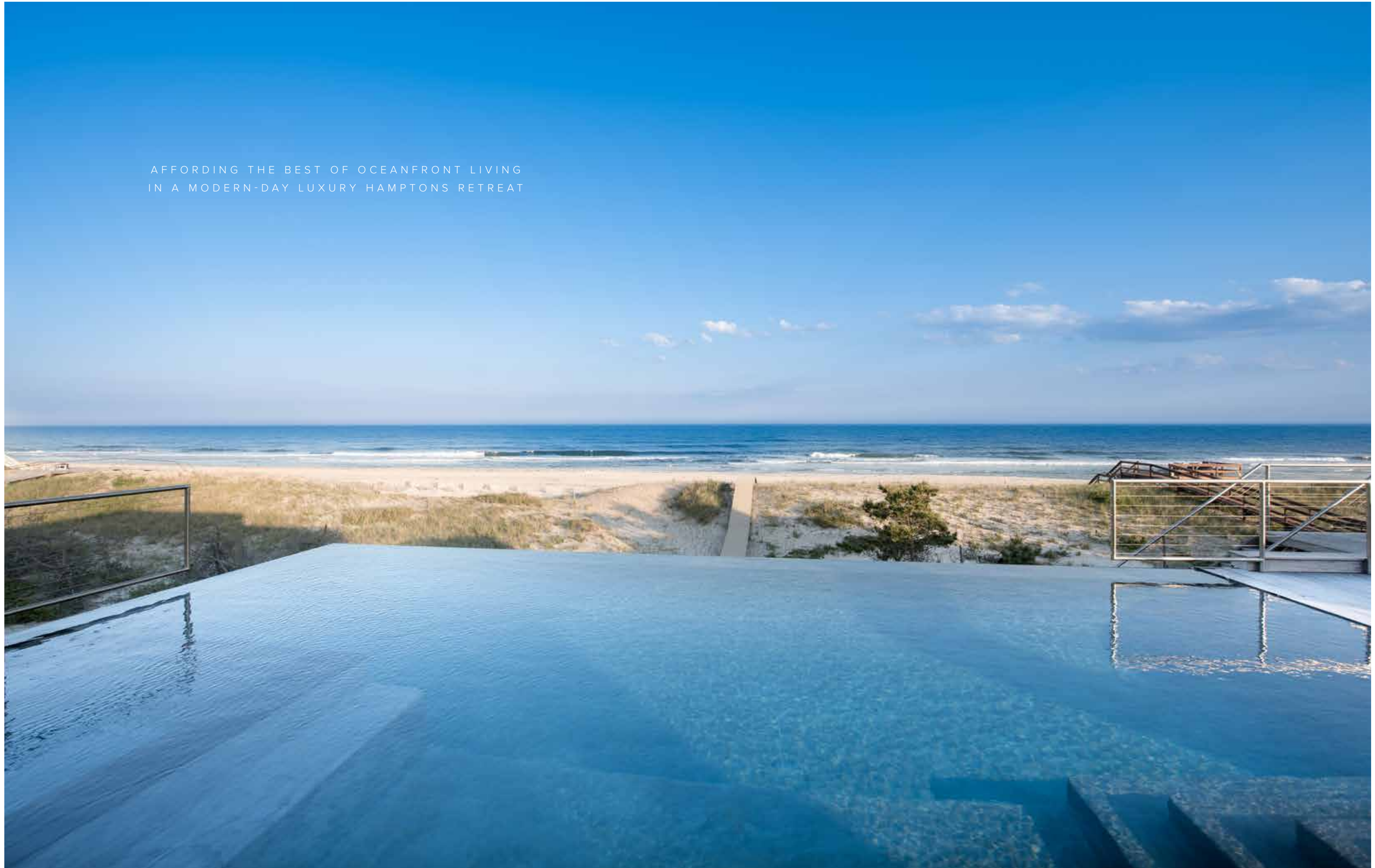




HUGE GLASS WALLS AT THE FRONT AND REAR OF THE HOME WITH  
UNIQUE GEOMETRICALLY EXTENDED WINDOWS IN BEDROOMS ARE  
DESIGNED TO OPTIMIZE THE OCEAN AND BAY VIEWS



AFFORDING THE BEST OF OCEANFRONT LIVING  
IN A MODERN-DAY LUXURY HAMPTONS RETREAT





THE ROOFTOP TERRACE IS THE PERFECT PLACE TO WATCH  
BEAUTIFUL WATERFRONT SUNSETS - COMPLETE WITH A FULL  
OUTDOOR KITCHEN AND MULTIPLE SITTING AREAS







## 65 DUNE ROAD

EAST QUOGUE, NEW YORK

The modern-day vision of a luxury Hamptons oceanfront retreat has come to life at 65 Dune Road, a contemporary work of art capitalizing on spectacular ocean and bay views and sleek, thoughtfully designed living spaces. This newly-completed, one-of-a-kind 9,300 SF+/- showplace perched high above the dunes sits on a supreme 1.36-acre elevated oceanfront lot on prized Dune Road, nestled between the Atlantic Ocean and Shinnecock Bay in an intimate enclave.

Awing the senses with a backdrop of dramatic water views and powder blue skies was the impetus for the thoughtful creation of such a captivating residence, situated on a coveted stretch of white sandy beach. Designed with a complete flow-through layout and by maximizing the use of glass, 65 Dune Road offers the most sensational vistas in every direction. To the south, the gorgeous turquoise blues of the ocean blend seamlessly with the horizon. To the north, the breathtaking waters of the bay overtake you, putting the finishing touches on a setting that is incomparable. Huge glass walls at the front and rear of the home with unique geometrically extended windows in bedrooms are designed to optimize the ocean and bay views.

Begin each day gazing at sunrises over the Atlantic Ocean on your expansive rooftop deck or one of many large balconies, as nothing stands between you and your view. Relax by the custom heated saltwater infinity pool and spa 28' high above the dunes, and dine al fresco with the convenience of two built-in outdoor kitchens. Steal a moment for yourself and venture out for a walk along your private dune walk to the quiet beachfront.

An open staircase and glass-enclosed elevator access the upper levels. A magnificent 30' x 80' great room stuns with an open panorama of the Atlantic and effortless flow to the outdoor entertaining oases. The elegant gourmet kitchen with oversized European appliances, polished Calacatta Gold marble countertops and Molteni cabinetry is adjoined by a large pantry and wine cellar for easy serving. A grand master suite with a gas fireplace and wall of glass extends to a private sun deck. Completing the allure are seven additional well-appointed en-suite bedrooms, a glass-enclosed media room, fitness center, laundry and 2-car garage. Sustainability is respected through the use of solar panels, recycled materials, continuous insulation, a fully automated lighting control system, state-of-the-art HVAC, low-E glass plus automatic solar & blackout shades.

Here awaits exceptional moments where light open spaces form a gallery for your daily pursuits and where design transcends the aesthetic and becomes a way of life. It's the fine details that conjure powerful sensations and timeless impressions. Beautifully crafted with exquisite finishes, 65 Dune Road encompasses minimalism, eclecticism, and modernism at once.

FOLLOW THIS PROPERTY ON INSTAGRAM

[#65DuneRoadEastQuogue](#)



## & Living Artfully

65 DUNE ROAD, EAST QUOGUE | \$15,975,000

---

### *overview*

- Oceanfront
- Situated on Dune Road between Shinnecock Bay and the Atlantic Ocean
- 1.36 Acres +/-
- Newly Constructed
- Modern – Ceiling Glass Design
- 9,300 SF+/
  - 8 Bedrooms
  - 8 Full & 2 Half Bathrooms
  - 2 Fireplaces
  - Glass Enclosed Elevator
  - Glass Sliding Doors
  - Sun Deck
  - Heated Saltwater Infinity Edge Pool with Spa & Sun Shelf
  - Rooftop Terrace with Outdoor Chef's Kitchen, Dining Area, and Roof Walk
  - Custom Wine Cellar
  - Fitness Center
  - Media Room
  - 2 Car Garage
  - Dune Walk to Beach
  - Putting Green

### *ocean & bay views*

- Panoramic Sunrise and Sunset Views of the Atlantic Ocean and Shinnecock Bay
- 

### *interior features*

- 12' Ceilings
  - Elevette 500 Series All Glass Elevator
  - Radiant Heated Floors Throughout
  - Solid Core Mahogany Doors Throughout
  - Arcadia Thermal Impact Windows
  - Painted Gypsum Board Ceilings and Walls
  - Molteni/Dada Eucalyptus Paneling
  - 93" Element4 Modore 240 Gas Fireplaces in Living Room and Master Bedroom
- 

### *appliances*

- High End Appliances were Installed Throughout and Include:
  - 93" Element4 Modore 240 Gas Fireplaces
  - Miele Ovens, Dishwashers and Warming Drawer
  - Thermador Refrigerators/Freezers
  - Molteni Gliss Custom Closets
  - 16" Aluminized Steel Laundry Chutes with Stainless Steel Hopper Doors

### *technology*

- Full House Sound Wiring w/Triad Speakers, Sonos Ready
  - Control4 Systems for Lighting & Automation with Keypads & Touchpads
  - Ruckus Network Wi-Fi, Shade Pockets Ready for Lutron Motors to be Interfaced with Control4 System and Shear Weave Fabric Shades
  - Bellringer Security System
- 

### *exterior features*

- Alucobond with Alucore Roof
- The EIFS is Installed with Rain Screen, Continuous Insulation and Zip Sheathing Along with an 11KW PV System on the Upper Roof
- Dune Walk with Thru-Flow Decking
- Madras Stone Paving Steps and Entry Platform
- Pea Gravel Driveway with Parking for 6 Cars
- Custom Heated Saltwater Infinity Edge Pool with Spa & Sun Shelf
- 2 Built-in Outdoor Kitchens
- Mahogany Garage Doors

### *landscape features*

- Sodded Putting Green
  - Hollywood Juniper End Screening
  - Blue Russian Sage Planter Boxes
  - Japanese Black Pine Side Yard Screening
  - Northern Bayberry Side Yard and Roadway Ground Cover
  - American Beach Grass at Dune, Rear Yard and Dune Walk
- 

### *mechanical*

- Pex Domestic, PVC Waste, and Cast-Iron Storm Plumbing Systems
  - NFPA 13 Concealed Heads Fire Suppression
  - Daikin VRF Ductless HVAC
  - Crown Phantom Condensing Hot Water Heater with Superstor
  - Radiant Heated Floors Throughout
  - Full House Generator
- 

### *awards*

- 2016 LIAIA Archi Award for Design Excellence
- 2017 National Homebuilders Award for Green Construction





MINIMALISM  
ECLECTICISM  
MODERNISM

---

Here awaits exceptional moments where light open spaces form a gallery for your daily pursuits and where design transcends the aesthetic and becomes a way of life. It's the fine details that conjure powerful sensations and timeless impressions.





## TRULY AN INSPIRED EXISTENCE

Awing the senses with a backdrop of dramatic water views and powder blue skies was the impetus for the thoughtful creation of such a captivating residence, situated on a coveted stretch of white sandy beach. Designed with a complete flow-through layout and by maximizing the use of glass, 65 Dune Road offers the most sensational vistas in every direction.





A magnificent 30' x 80' great room with a 93" Element4 Modore 240 Gas Fireplace, stuns with an open panorama of the Atlantic and effortless flow to the outdoor entertaining oases.





To the south, the gorgeous turquoise blues of the ocean blend seamlessly with the horizon.







TO THE NORTH, THE BREATHTAKING  
WATERS OF THE BAY OVERTAKE YOU,  
PUTTING THE FINISHING TOUCHES ON  
A SETTING THAT IS INCOMPARABLE.

---







## GOURMET KITCHEN

The elegant gourmet kitchen with oversized European appliances, polished calacatta gold marble countertops and Molteni cabinetry is adjoined by a large pantry and wine cellar for easy serving.









BUTLER'S PANTRY

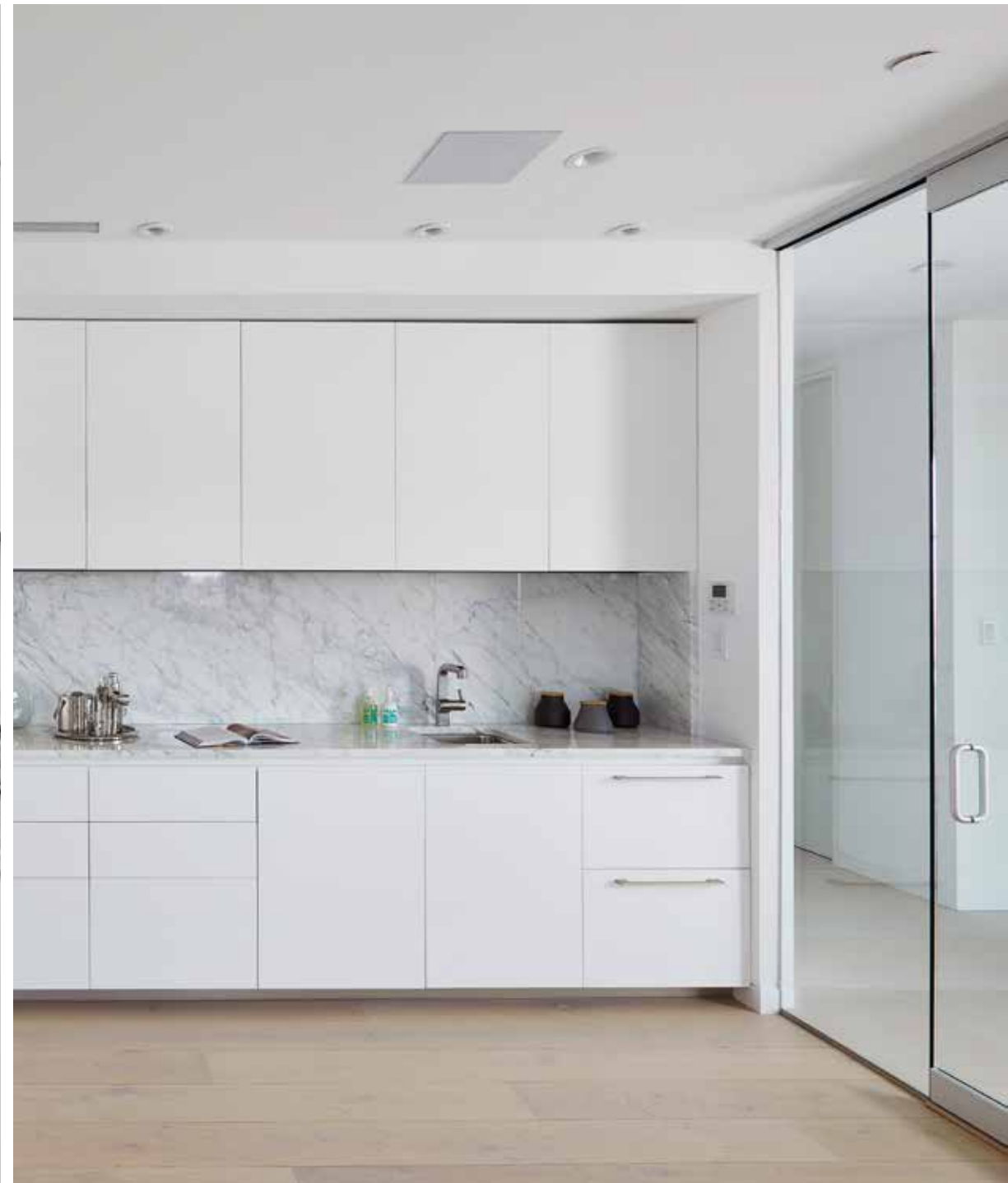


WINE CELLAR





Glass-enclosed media room with bay views.







## OPULENT MASTER RETREAT

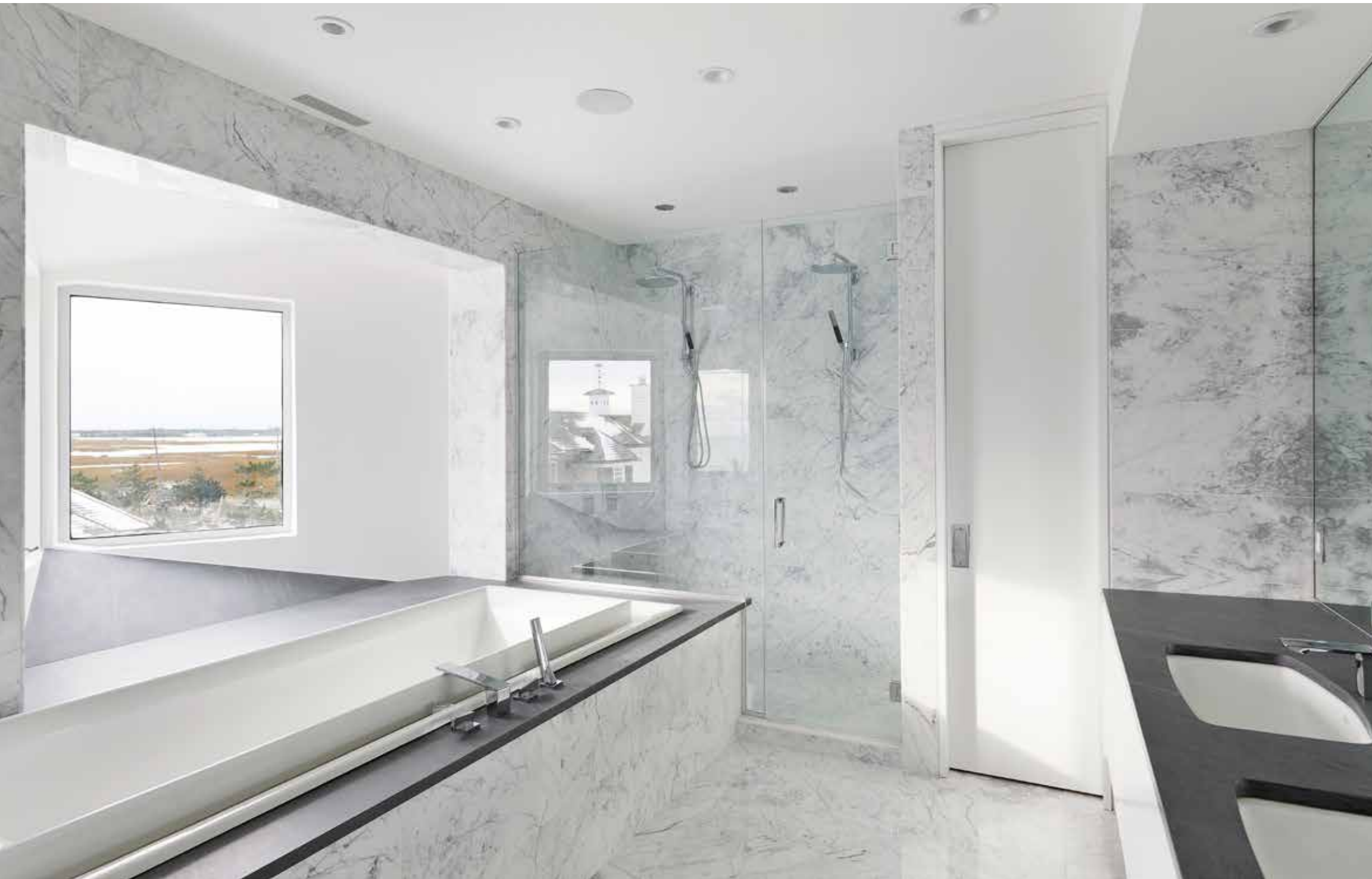
---

On the second level is a grand master suite with a 93" Element4 Modore 240 Gas fireplace and wall of glass extends to a private sun deck. Complete with a large walk-in closet and luxurious master bath.









The luxurious master bathroom features a 104" x 41" Kohler Effervescence bathtub with cascading water over the rim, adjustable bath leveling system and two raised molded seats with dual lumbar support.





Completing the allure are seven additional well-appointed en-suite bedrooms.





## OUTDOOR ENTERTAINING

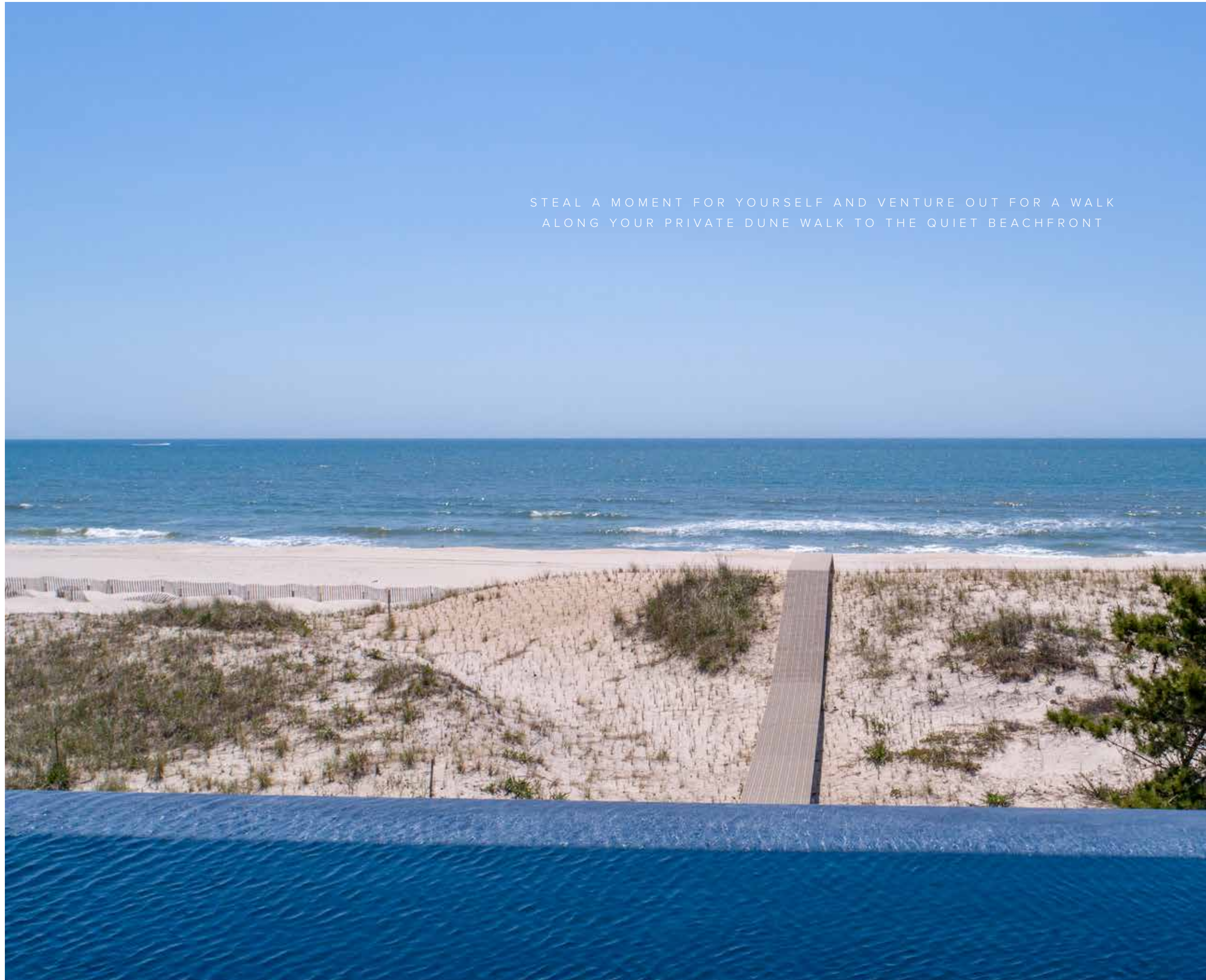
---

Relax by the custom heated saltwater infinity edge pool with sun shelf and spa 28' high above the dunes, and dine al fresco with the convenience of two built-in outdoor kitchens.











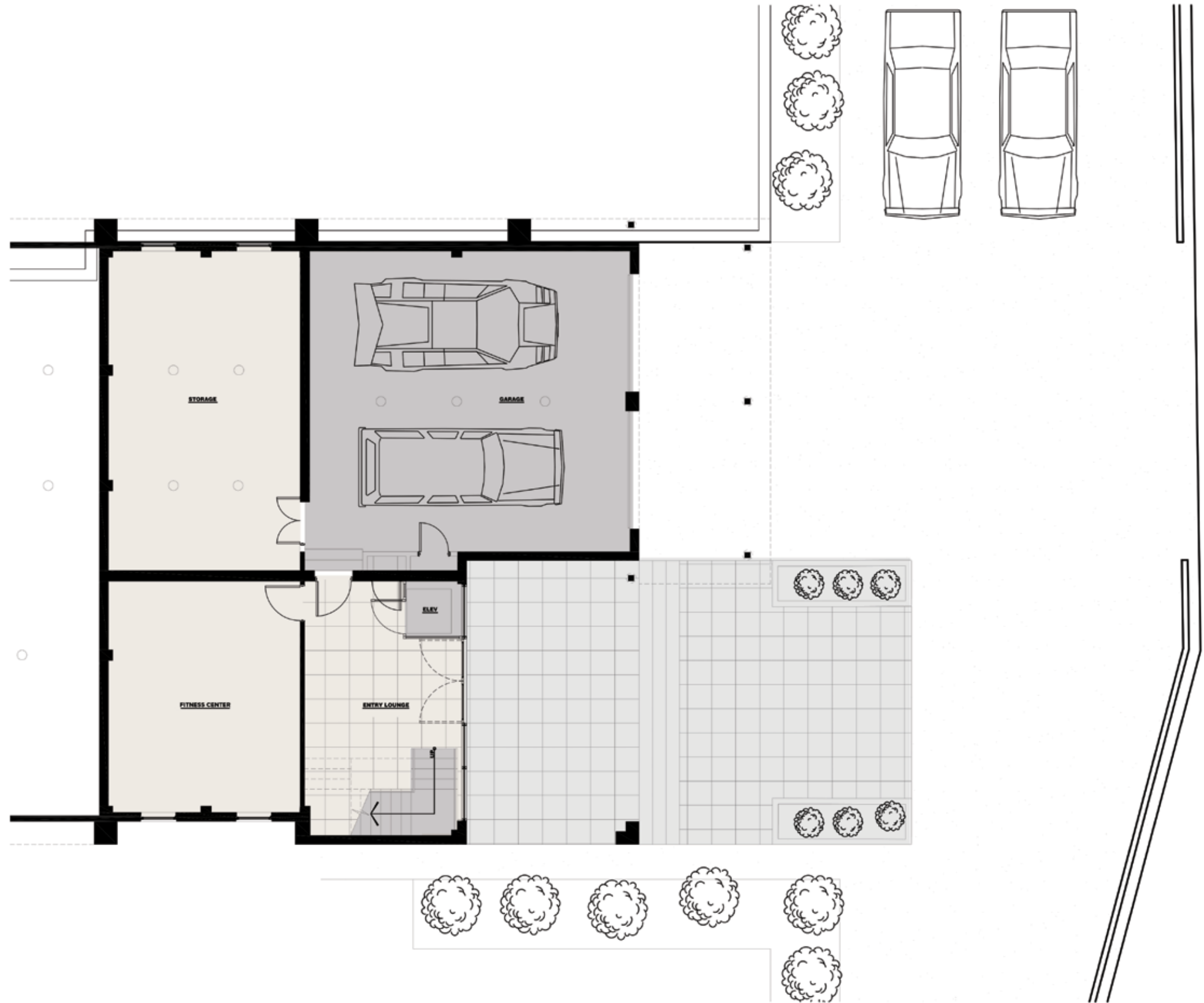




GROUND LEVEL

- 2 Car Garage
- Entry Lounge
- Fitness Center
- Storage Room

- UTILITY
- LIVING
- BEDROOM
- BATH
- DECK/TERRACE
- POOL





## FIRST LEVEL

- 5 Over-Sized and Well-Appointed En-Suite Bedrooms
- 5 Bathrooms
- Private Glass Enclosed Media Room
- Lounge
- Office
- Terrace
- Laundry Room
- Powder Room
- Building Mechanical Room



- UTILITY
- LIVING
- BEDROOM
- BATH
- DECK/TERRACE
- POOL



## SECOND LEVEL

- 30' x 80' Great Room with:
  - Wall of Glass
  - 93" Element4 Modore 240 Gas Fireplace
  - Ocean Views
- Dining Area
- Modern Molteni Designed Chef's Kitchen with:
  - Custom Cabinetry
  - Polished Calacatta Gold Marble Countertops
  - Professional Grade Over-sized Miele and Thermador Quality Appliances
  - Butler's Pantry
  - Vigilant Custom Wine Cellar
- Grand Master Suite with:
  - Ocean Views
  - Sun Deck
  - Private Wall of Glass
  - 93" Element4 Modore 240 Gas Fireplace
  - Sitting Room
  - Master Bathroom with 104" x 41" Kohler Effervescence Bathtub
- 2 Additional En-Suite Guest Bedrooms
- Atrium
- Powder Room

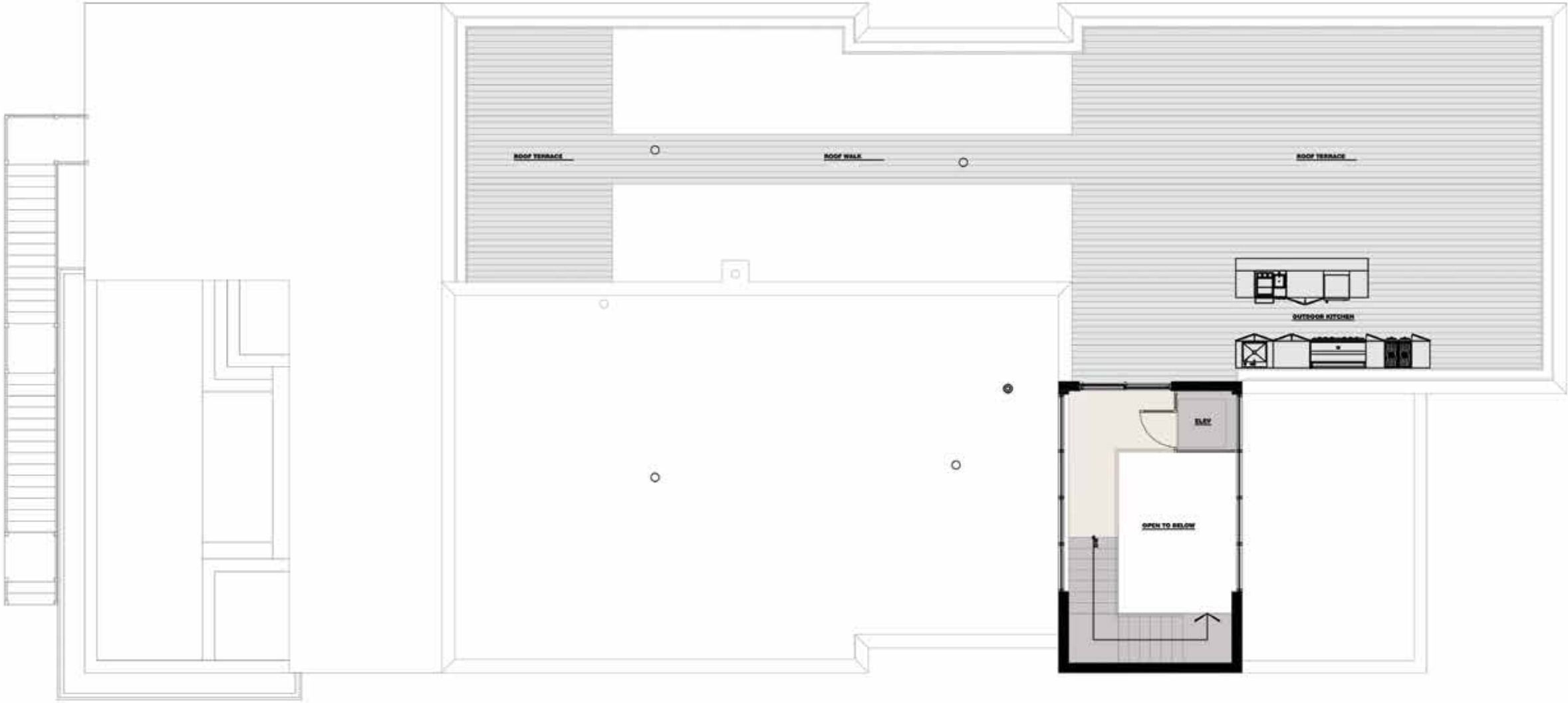


- UTILITY
- LIVING
- BEDROOM
- BATH
- DECK/TERRACE
- POOL



# ROOF TERRACE

- Outdoor Chef's Kitchen
- Dining Area
- Roof Walk
- Stainless Steel Cable Railing



- UTILITY
- LIVING
- BEDROOM
- BATH
- DECK/TERRACE
- POOL









*ZACHARY VICHINSKY*

Lic. Real Estate Broker

631.766.0945

[zachary@bespokerealestate.com](mailto:zachary@bespokerealestate.com)

*CODY VICHINSKY*

Lic. Real Estate Salesperson

631.926.3948

[cody@bespokerealestate.com](mailto:cody@bespokerealestate.com)

*BESPOKE*

REAL ESTATE

[BESPOKEREALESTATE.COM](http://BESPOKEREALESTATE.COM)