



OVERSIZED WOOD-CLAD
DOUBLE-GLAZED WINDOWS*



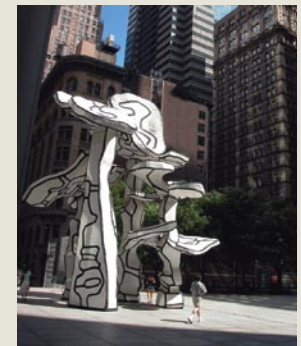
OAK STRIP FLOORING THROUGHOUT



BEAUTIFULLY DESIGNED
KITCHENS & BATHS*



24-HOUR GOURMET &
FRESH PRODUCE FARMER'S
MARKETS NEARBY



10 MINUTES FROM MIDTOWN
WALK TO WORK DOWNTOWN

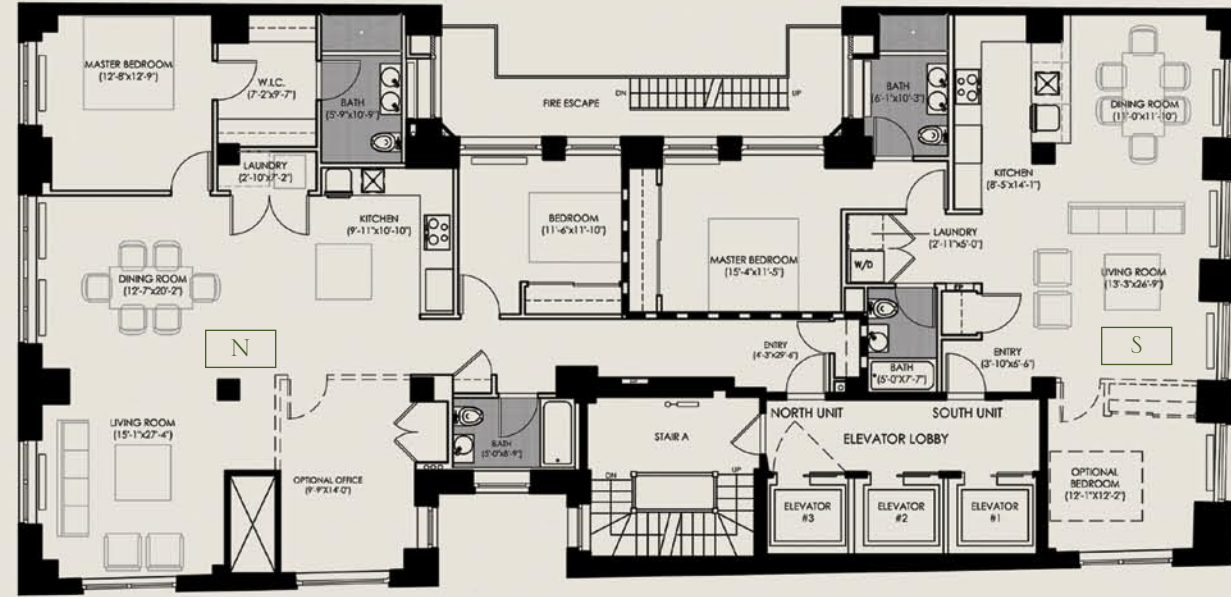
NEW RESIDENTIAL VIBRANCY COUPLED WITH OLD NEW YORK CHARM



LOFTS OF DISTINCTION

The versatile floor plan layouts at 50 Pine afford buyers flexibility in tailoring a home to suit their individual or family needs. Buyers of the building's S lines characterized by classic 2-3/4" oak flooring, high ceilings and oversized wood windows, can choose from striking one and two-bedroom arrangements.

TYPICAL FLOORPLAN FLOORS 3-11



These homes feature a generously-sized living/dining area, an open kitchen, a master bedroom with an en-suite bath, a second full bathroom, a laundry closet and the option for a second bedroom.

More spacious N-line lofts similarly house an open kitchen, a laundry closet and master bedroom with an en-suite bath, grand living and dining room, second bedroom and bath, and the option for a third bedroom or an office/den for added living comfort.

The Unit Layout, square footage and dimensions are approximate and subject to normal construction variances and tolerances. Square footages exceed the usable floor area. This floor plan is based on construction drawings. Minor inaccuracies between this floor plan and the actual Unit layout when built, will not excuse a Purchaser from completing the purchase of a Unit without abatement in price and without recourse against the Sponsor. Sponsor reserves the right to make changes in accordance with the Offering Plan

A SPACIOUS RETREAT IN THE HEART OF LEGENDARY WALL STREET

Architecturally rich and luxuriously appointed, 50 Pine exudes Old World style with its classic European aesthetic, yet is very much modern-day New York with its backdrop the vibrant Financial District – the city's trendiest new residential enclave.

Directly overlooking Chase Plaza and its piazza-style open space, 50 Pine also offers unobstructed views from Pine Street to Broadway, framed by the timeless oversized wood-clad and double-glazed windows custom created and installed by Nabytek Europa of Prague.



TOP: WEST VIEW FROM PH ROOF DECK



MIDDLE: STONE STREET



BOTTOM: OUTSIDE THE NEARBY MUSEUM OF THE AMERICAN INDIAN

Surrounding 50 Pine is an exciting, exclusive neighborhood that is as convenient as it is delightful. Jubilee Gourmet Market on John Street provides 24-hour service and home delivery, while Zeytuna on Maiden Lane and the Amish and Farmers Markets at Battery Place are also conveniently nearby. Historic Stone Street, the first stone paved street in old New Amsterdam, not only adds a touch of charm but is a popular spot for downtown diners with great bistros like Chef Smorgas and Cassis, plus other hot spots.



ATTENDED LOBBY



SAMPLE KITCHEN



DRAMATIC LOFT SPACES

Artist Renderings

MODERN IN CONVENIENCE, CLASSIC IN CHARM

A myriad of diverse culinary destinations stretching from Wall Street to TriBeCa are also within easy reach, as are subway, bus and taxi service to any corner of Manhattan.

Looking out from the building itself, one is equally overcome by the feeling of the old intermingling with the new thanks to contemporary views of Jean Dubuffet's dramatic "Four Trees" sculpture and of Isamu Noguchi's famous sunken fountain and sculptures in Chase Plaza.



TOP: DEBUFFET SCULPTURE

MIDDLE: JUBILEE MARKET

BOTTOM: VIEW FROM CHASE PLAZA



* The Unit Layout, square footage and dimensions are approximate and subject to normal construction variances and tolerances. Not all items depicted in artist's rendering are included in Unit purchase. Sponsor reserves the right to make changes in accordance with the Offering Plan

AN ENTICING BLEND OF GRANDEUR AND COMFORT

The magnificent lofts at 50 Pine boast splendid interiors that are grand yet contemporary. One is instantly awed by ceilings that soar above 10', creating an airy ambiance enhanced by the richness of oak floors and windows. Sumptuous master baths envelop you in luxury that is highlighted by front-hanging ebonized oak Rifra cabinetry and wonderfully durable yet easily cleanable Marmo Complex sinks.



SAMPLE BATHROOM



TYPICAL N-LINE CORNER VIEW

Artist Renderings

Upscale kitchens are similarly distinctive, and boast such refined features as granite counters, stainless steel Jenn Air gas cooktops and wall ovens, built-in Broan hoods with external exhaust, Titanium bottom-freezer refrigerators, Bosch dishwashers, and custom walnut cabinetry. Such exquisite living elegance is intriguingly complemented by an exceptionally unique building and a prime neighborhood address designed for the most discerning of residents.

50 Pine Street – When Location Matters, and Luxury Counts.

* The Unit Layout, square footage and dimensions are approximate and subject to normal construction variances and tolerances. Not all items depicted in artist's rendering are included in Unit purchase. Sponsor reserves the right to make changes in accordance with the Offering Plan

APPLIANCES

- Jenn Air Stainless Steel 30' Gas Cooktop
- Jenn Air Stainless Steel 30' Electric Wall Oven
- LG Brand Titanium Bottom Freezer/CD Refrigerator
- Bosch 24" Stainless Steel 2 Rack Dishwasher
- Broan Externally Ventend Stainless Steel Built-in Hood
- Panasonic Stainless Steel Microwave
- Zuchetti Opere Polished Chrome Kitchen Faucet
- Moen Lancelot Stainless Steel Kitchen Sink
- LG Brand Front Loading Stackable Washer and Dryer

FINISHES

- Black Granite Kitchen Counter Top (honed finish)
- Custom Dark Stained Walnut Wood Kitchen Cabinetry
- Metro Mosaic White Glass Wall Tile (master bath)
- Metro Mosaic White Floor Tile (master bath)
- Rifra/Vivendum Dark Stained Oak Wood Cabinetry (master bath)
- Penny-round White Floor Tile (guest bath)
- Nemo Glazed Ceramic Wall Tile (guest bath)
- Rifra/Vivendum Dark Stained Oak Wood Cabinetry (guest bath)



Under the guidance of President David Grasso, Metro Development Company is a full-service real estate organization with affiliates involved in construction, development, leasing and property management. Metro has developed in excess of six million square feet of residential, office, retail, hotel and industrial space in the Northeast. Previous condominium projects include the Grande, Grandview Condominiums and The Lofts at Bella Vista, all in Center City, Philadelphia.

Other current Metro Development projects include 245 10th Avenue, proposed new construction of a 12-story residential tower adjacent to the High Line in New York City's West Chelsea neighborhood, Shops At Valley Square, a mixed-use lifestyle shopping center (Bucks County, PA), and 1601 Vine Street, a Whole Foods anchored, mixed-use development with over a million square feet of retail and residential space (Philadelphia, PA).



LOFTS OF DISTINCTION