

Savin C2824/  
C3528/C4535

> MULTIFUNCTION SYSTEMS  
WITH CONVENIENCE COLOR

**Boost Your  
Productivity  
In Both Color  
And Black & White!**



**Savin C2824/C3528/C4535**



**savin®**

# Savin C2824/C3528/C4535. Full-Color

Today in business, it's all about finding ways to work smarter. With the Savin C2824/C3528/C4535 Series, you can have the functionality of black & white when you need it and the benefits of color when you want it. This Series handles all your document production and distribution needs with standard copying, network printing and scanning, even optional faxing! Now you'll be as productive working in full color as you are in black & white.



*The Savin C4535 with Large Capacity Tray and Booklet Finisher.*

## Optimal Productivity From A Single Source

Now you don't have to send out for color or use separate devices for your color and black & white work. You can reap the rewards of productivity, reliability and cost-control with one single wise investment. These Savin systems are designed to enhance both workflow and cost efficiency by streamlining all your document requirements into one multifunction system.



*The C2824/C3528/C4535 print black & white at 28/35/45 ppm and eye-catching color at 24/28/35 ppm.*

## Think Smart, Work Fast

Because time is of the essence in the way we all do business, these high-performance Savin systems output your first page in no time - just 8 seconds for black & white and 10 seconds for color with the C2824 and C3528, and 6 seconds for black & white and 8 seconds for color with the C4535.

After that, you can speed through printing and copying at an outstanding rate of 28/35/45 ppm in black & white, and 24/28/35 ppm in color respectively,

so your workgroups can produce job after job without missing a beat. What's more, the same speed is maintained in duplex mode, which not only saves paper, but time and money too!

## Maximize The Capabilities

The Savin C2824/C3528/C4535 Series allows you to fulfill all your black & white and color print needs. PCL 6 support provides industry-standard protocols for immediate user interface. The icon-based **RPCS (Refined Print Command Stream)** print driver makes output selections simple and error free, especially when printing in popular applications such as Word, PowerPoint and Excel. Optional true **Adobe PostScript 3** is for users working with more complex files and/or optimal printing of Acrobat PDF files.



*Choose from PCL 5c, PCL 6, RPCS, optional Adobe PostScript 3 and PDF Direct Print for all your printing needs.*

# Multifunction Performance.

Print efficiency is heightened with the convenience of **PDF Direct Print**, a traffic-reducing feature that lets the system receive a PDF file directly from a connected PC, then print it, without needing access to Adobe Acrobat.

## A New Age Of Document Distribution

The Savin C2824/C3528/C4535 Series was built for the Internet with a standard scanning capability that lets you scan black & white OR color hardcopy documents and images, then save or share them in a variety of ways. Even duplex scanning is easy with the handy standard Automatic Reversing Document Feeder.

- Scanned documents in JPEG, TIFF or PDF file formats can instantly and simultaneously be sent to multiple e-mail recipients via the Internet.
- **Scan-to-Email** dramatically cuts time and expense vs. costly faxing. LDAP support lets you use your existing e-mail system, or you can store up to 2,000 more addresses – even enter names manually – for seamless distribution.

## Scan-to-Email



*Output on a variety of paper weights from 16 lb. to 90 lb. bond index and paper sizes up to 12" x 18".*

- Or securely send forms, reports and other documents right to a designated network folder (up to 2,000 shared folder destinations can be stored), allowing authorized users with proper network access privileges to review or edit. **Scan-to-Folder** also serves as a cost-cutting archival and file-sharing resource as well as a basic print-on-demand solution.
- Sending scanned images directly to an FTP server (**Scan-to-FTP**, which bypasses the mail server) reduces network traffic and facilitates anytime sharing of large files between remote workgroups and offices, even if users have different operating systems!
- With **Network TWAIN Scanning**, captured black & white or color images can easily be edited back at the host PC, integrated into other electronic documents or saved for retrieval in the future.

## Need Fax? No Problem!

Faxing is vital in business, yet doesn't have to be a separate function anymore. The optional fax capability consolidates all your document functions, plus delivers super-fast transmission speeds and three-line support minimizing phone charges and fax gridlock.

## Versatility – That's What's In Store!

The efficient Document Server allows you to store printed, copied, scanned or faxed documents, download them to your desktop to make notations, or merge them into a new document with unique headers and page numbers.

## Diverse Document Handling For One And All

Besides productive standard duplexing that maintains full output speed, the Savin C2824/C3528/C4535 Series further supports your office workgroups'





*The C2824/C3528/C4535 Series features large paper capacities, the ability to handle a wide range of paper sizes and weights, plus finishing options that include a Booklet Finisher, 2,500-Sheet Multi-Tray Finisher and a Multi-Bin Tray.*

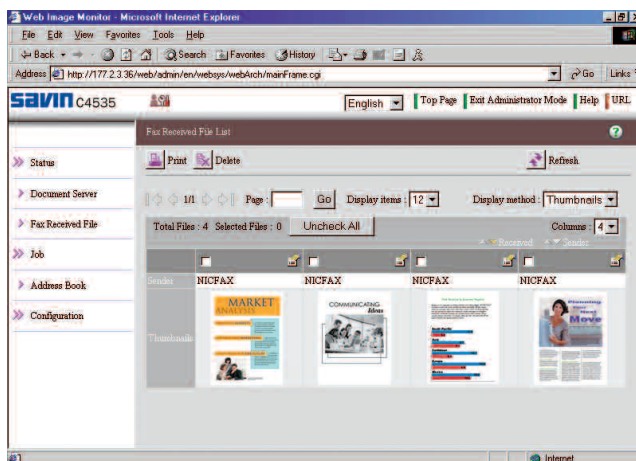
varied needs with impressive paper handling capabilities that accommodate sizes up to 12" x 18", and weights from 16 lb. bond up to 90 lb. index, seamlessly fed through the Bypass Tray. Job flow stays continuous thanks to the standard 1,100-sheet paper supply and maximum capacity of 3,100 sheets.

### Make A Big Finish

The Savin C2824/C3528/C4535 Series' advanced finishing capabilities make comprehensive document processing complete and customizing documents easy. Choose from the optional **Booklet Finisher** which folds and staples your sets, or the **2,500-sheet Multi-Tray Finisher** that collates and staples documents for more traditional finishing touches. Top off convenience with optional hole punching, available with either finisher.

### All You Can Manage

Now that you can do it all with the Savin C2824/C3528/C4535 Series, you can also manage it all right from your desktop courtesy of the web-based utility, **Web Image Monitor**. No added software is needed to view system status and job histories, access or change printer settings, monitor toner and paper, reset a job or reboot the printer and more. You're virtually up, running and working from any location on your network!



*Manage the Savin C2824/C3528/C4535 right from your desktop with the web-based utility, Web Image Monitor.*



The Booklet Finisher produces professional-quality folded and stapled booklets.



Maximize productivity with a large paper capacity of up to 3,100 sheets.



Standard Ethernet and USB 2.0 ports connect quickly and easily to your computer.

# Savin C2824/ C3528/C4535

## Secure, So You're Always Sure

Protection is the name of the game when it comes to your priceless data. The Savin C2824/C3528/C4535 Series puts security priority one with a full suite of safeguards that prohibit threats and unauthorized use. No one without a valid network password and user name can access the system. Windows Authentication utilizes the existing Windows network username/password to turn break-in attempts into no-win situations.

The optional **DataOverwriteSecurity System** protects against stealing HDD data by automatically overwriting information three times after every copy, scan, fax or print job.



## Ownership Overall? Completely Cost Effective!

With the multi-faceted Savin C2824/C3528/C4535 Series at work in your office, you'll trim down expenses by eliminating the need to purchase and maintain separate devices for copying, printing, scanning and faxing. You'll also enjoy the same exceptional menu of black & white document production features at the same low-cost per page you're used to.

Plus, you'll gain the luxury of having color for you business documents at your fingertips! Imagine – color on site, so you don't have to outsource; color when you need it, so you can use it when you want to; color in your control, which means you only pay for it when you use it. And no one can use color unless authorized. Color Usage Restriction, another plus of Windows Authentication, also keeps costs in line by limiting groups in a domain to the use of black & white or color.

## Tailored To The Way You Work

### Embedded Software Architecture

*Embedded Software Architecture™* – an innovative Java (J2ME)-compatible software development platform – allows for the development of key applications that run on Savin MFPs and laser printers, dramatically enhancing your company's workflow. The Software Development Kit helps you address various specialized printing needs that may include forms printing, unique fonts, barcodes, retail transactions, and others. As such, the Savin C2824/C3528/C4535 Series can be easily customized to your preferences by controlling features such as the operation panel, printing, saving files and scanning.

The Savin C2824/C3528/C4535 Series...black & white productivity complemented by full-color convenience for unmatched overall value.

For more information contact  
your authorized Savin dealer



Standard 80-Sheet  
Automatic Reversing  
Document Feeder

Optional 2,500-Sheet  
Multi-Tray Finisher



Standard 100-Sheet  
Bypass Tray

Standard 2 x 500-Sheet  
Paper Trays

Optional 500-Sheet  
Paper Bank

# Savin C2824/C3528/C4535 Specifications

## GENERAL SPECIFICATIONS

Resolution	Copy: 600 dpi Print: Up to 1,200 x 1,200 dpi Scan: 600 dpi/256 gradations 11" x 17" maximum (full bleed on 12" x 18")
Copy Size	11" x 17" maximum (full bleed on 12" x 18")
Paper Sizes	<b>First Paper Tray:</b> 8.5" x 11" <b>Second Paper Tray/Paper Bank:</b> 11" x 17", 8.5" x 14", 8.5" x 11", 7.25" x 10.5", 8" x 13", 8.5" x 13" <b>Bypass Tray:</b> 5.5" x 8.5" to 12" x 18" <b>Large Capacity Tray:</b> 8.5" x 11" <b>Custom Paper Sizes:</b> Width: 3.5" to 12" (90 - 305 mm); Length: 5.8" to 18" (148 - 457.2 mm); 23.6" (600mm) for Fax/Printer; 18" (457.2mm) for Copy/Document Server
Warm-Up Time	Less than 99 seconds
First Copy Time	C2824/C3528: Black & white: 8 seconds Full-color: 10 seconds C4535: Black & white: 6 seconds Full Color: 8 seconds
Copy/Print Speed	C2824: 28/24 PPM (Black & white/Full-color) C3528: 35/28 PPM (Black & white/Full-color) C4535: 45/35 PPM (Black & white/Full-color)
Exposure Glass	Up to 11" x 17" (sheet/book/object)
Document Feeder	Automatic Reversing Document Feeder (ARDF) Original Size: Simplex: 5.5" x 8.5" to 11" x 17" Duplex: 5.5" x 8.5" to 11" x 17" Original Weight: Simplex: 11 lb. to 34 lb. Bond (40 - 128 g/m <sup>2</sup> ) Duplex: 14 lb. to 28 lb. Bond (52 - 105 g/m <sup>2</sup> ) Stack Capacity: 80 Sheets (20 lb. Bond)
Multiple Copies	Up to 999
Input Capacity	Standard: 2 x 500 sheets plus 100-sheet bypass tray Maximum: 3,100 sheets
Output Capacity	Standard: 500 sheets plus 100-sheet face-up output tray Maximum: 2,600 sheets with Multi-Tray Finisher
Paper Weights	Trays, Duplex Unit, Paper Bank: 16 to 28 lb. Bond (60 - 105 g/m <sup>2</sup> ) Bypass Tray: 16 lb. Bond to 90 lb. Index (60 - 163 g/m <sup>2</sup> )
Paper Types	Plain paper, laser printer qualified transparencies, and labels
Reproduction Ratios	7 reductions and 5 enlargement, 400%, 200%, 155%, 129%, 121%, 100%, 93%, 85%, 78%, 73%, 65%, 50%, 25% 25% - 400% in 1% increments
Zoom	Standard
Auto Duplex	Standard
Hard Disk Drive	80 GB (2 x 40 GB) (shared)
RAM	1 GB (shared)
Dimensions	26.4" x 27.5" x 33.8" (WxDxH)
Weight	Approximately 264 lbs. (120kg)
Power Requirements	120V 12A 60Hz
Power Consumption	1,440 watts or less
Energy Saver Mode	45 watts or less

## PRINTER CONTROLLER SPECIFICATIONS (Standard)

CPU	RM7065C 600MHz
RAM	1GB (shared)
Page Description Languages	PCL 5c, PCL 6, RPCS (standard); Genuine Adobe PostScript® 3/PDF Direct Print (optional)
Standard Interfaces	10BaseT/100BaseTX Ethernet (RJ-45), USB 2.0 High Speed
Optional Interfaces (Choose one)	IEEE 802.11b Wireless LAN Type H, IEEE 1284 Parallel Type A, IEEE 1394 Type B, and Bluetooth Type 3245
Network/OS	Windows 95, 98SE/ME/NT/2000/XP/Server 2003; NetWare 3.12, 3.2, 4.1, 4.11, 5.0, 5.1, 6; UNIX; Sun Solaris; HP-UX; SCO OpenServer; RedHat Linux; IBM AIX, Mac OS 8.6 - 9.2x, OS X 10.1 or later
Network Protocols	TCP/IP; IPX/SPX; SMB; AppleTalk (auto switching)
Utilities	SmartDeviceMonitor for Administrator and Client, Web SmartDeviceMonitor, Web Image Monitor, DeskTopBinder Lite; and Printer Utility for Mac (w/Adobe PostScript option)

## SECURITY SPECIFICATIONS

**Security Features**  
**DataOverwriteSecurity System (DOSS) Type D:** (Optional): Security feature that overwrites latent data on the system's hard drive after copy, scan, fax and print jobs.  
**Other Security Features:** SNMP v3 Authentication and Data Encryption (password/address book encryption); PDF Direct Print Password Protection; Locked (Secure) Print; User Codes; User Authentication

## SCANNER SPECIFICATIONS

Scanner Resolution	Monochrome mode: From 100 dpi to 600 dpi (1,200 dpi for TWAIN) Full-color mode: From 100 dpi to 600 dpi Default setting: 200 dpi
Scanning Speed	Scan-to-Email/Folder: Monochrome mode: 50 spm; Full-color mode: 35 spm Network TWAIN Monochrome mode: 36 spm; Full-color mode: 20 spm Main Scan: 297mm, Sub Scan: 432mm Original Sizes: 5.5" x 8.5" to 11" x 17" Standard: B&W Text; B&W OCR; B&W Text/Photo; B&W Photo; B&W Grayscale; Full Color Photo; Full Color Text Optional: Auto Color Selection (with optional File Format Converter)
Scan Area	Brightness; Contrast; Threshold;
Scan Mode	Gamma Adjustment; Halftone Pattern Black and white: TIFF (Single/Multi Page); PDF (Single/Multi Page); Grayscale/Full color: JPEG (Single Page); PDF (Single/Multi Page)
Image Adjustment	Scan-to-Email (with LDAP support), Scan-to-Folder (SMB/FTP), Network TWAIN scanning
File Formats	
Scan-to modes	

## DOCUMENT SERVER SPECIFICATIONS

Capacity	80 GB (2 x 40 GB)
Max. Stored Documents	2,000
Max. Pages/Document	1,000
Max. Pages of All Stored Documents	9,000

## FACSIMILE SPECIFICATIONS (Optional)

Fax Unit Type 3245	
Type	ITU-T G3
Circuit	PTSN, PBX
Resolution	200 x 100 dpi; 200 x 200 dpi; 400 x 400 dpi (optional with SAF memory)
Modem Speed	33,600 bps - 2,400 bps with automatic shift down
Transmission Speed	2.0 seconds (Based on ITU-T Test chart #1 in standard resolution, JBIG compression)
Scan Speed	0.86 seconds (A4, any mode)
Compression Method	MH/MR/MMR/JBIG
Auto Dials	2,000 Quick Dials; 100 Groups Dials (500 locations each)
Memory Capacity	4 MB (320 pages); Maximum 28 MB (2,240 pages)
Additional Modes Supported	Internet Fax by E-mail (T.37), IP Fax (T.38), LAN Fax, Fax Forwarding to E-mail, Fax Reception notice via E-mail, Fax Transmission notice via E-mail
Options	Additional G3 Fax Line Type 3245 (up to 2 additional), Fax SAF Memory (32 MB), Handset Type 1018

## HARDWARE ACCESSORIES

<b>PS580 1-Tray Paper Bank*</b>	
Paper Size	5.5" x 8.5" to 11" x 17"
Paper Weight	16 to 28 lb. Bond (60 - 105 g/m <sup>2</sup> )
Stack Capacity	500 sheets
<b>PS590 2-Tray Paper Bank*</b>	
Paper Size	5.5" x 8.5" to 11" x 17"
Paper Weight	16 to 28 lb. Bond (60 - 105 g/m <sup>2</sup> )
Stack Capacity	2 trays x 500 sheets
<b>PS600 Large Capacity Tray*</b>	
Paper Size	8.5" x 11"
Paper Weight	16 to 28 lb. Bond (60 - 105 g/m <sup>2</sup> )
Stack Capacity	2 tandem trays x 1,000 sheets
<b>FAC28 Cabinet*</b>	
*Please note either the Cabinet Stand or one of the paper options must be selected.	
<b>PT460 Multi-Bin</b>	
Number of Bins	2 bins
Paper Size	8.5" x 11" to 11" x 17"
Paper Weight	16 to 28 lb. Bond (60 - 105 g/m <sup>2</sup> )
Stack Capacity	Tray 1: 100 sheets, Tray 2: 250 sheets
<b>SR960 Multi-Tray Finisher</b>	
Paper Sizes	8.5" x 11" to 11" x 17"
Paper Weights	16 to 28 lb. Bond (60 - 105 g/m <sup>2</sup> )
Stack Capacity	Upper Tray: 500 sheets (8.5" x 11" or smaller), 250 sheets (11" x 17" or smaller); Lower Tray: Staple: 1,500 sheets (8.5" x 11"); 750 sheets (11" x 17" or smaller), No Staple: 2,000 sheets (8.5" x 11"); 750 sheets (11" x 17" or smaller)
Staple Capacity	50 sheets (8.5" x 11" or smaller), 30 sheets (8.4" x 14" or larger)
Staple Paper Size	8.5" x 11" to 11" x 17"
Staple Paper Weight	17 to 24 lb. (64 - 90 g/m <sup>2</sup> )
Staple Position	1 staple: 3 positions (top, top slant, bottom) 2 staples: 1 position (left 2/top 2)
Stapler Capacity	5,000 per cartridge
<b>Punch Option Type 1045 available for Multi-Tray Finisher</b>	
<b>SR950 Booklet Finisher</b>	
Paper Sizes	8.5" x 11" to 11" x 17"
Paper Weights	16 to 34 lb. Bond (60 - 128 g/m <sup>2</sup> )
Stack Capacity	Non-Staple Sort: 1,000 sheets (letter) Staple Sort: 1,000 sheets (letter) Folding: Folded - 10 sets (6 - 10 sheets/set), 20 sets (2 - 5 sheets/set) 50 sheets 8.5" x 11"; 25 sheets larger than 8.5" x 11"
Staple Capacity	8.5" x 11" to 11" x 17"
Staple Paper Size	8.5" x 11" to 11" x 17"
Staple Position	1 Staple: 2 positions, 2 Staples: 2 positions
Stapler Capacity	5,000 per cartridge
Booklet Paper Sizes	8.5" x 11", 8.5" x 14", 11" x 17"
Booklet Paper Weights	17 to 20 lb. (64 - 80 g/m <sup>2</sup> )
<b>Punch Option Type 2238 available with Booklet Maker</b>	

## ADDITIONAL ACCESSORIES

<b>File Format Converter Type B</b>
<b>Platen Cover Type 3800C</b>
<b>Key Counter Bracket Type H</b>
<b>Scanner Accessibility Option Type 3245</b>

## SUPPLIES

<b>Black Toner</b> (Yield: 24,000 @ 5%)
<b>Cyan Toner</b> (Yield: 10,000 @ 5%)
<b>Yellow Toner</b> (Yield: 10,000 @ 5%)
<b>Magenta Toner</b> (Yield: 10,000 @ 5%)
<b>Waste Toner Bottle</b>



Savin Five Dedrick Place, West Caldwell, NJ 07006

SAVIN® is a registered trademark of Ricoh Corporation. Windows® and Windows® 3.1/95/98/Me/NT4.0/XP are registered trademarks of Microsoft Corporation. Macintosh®, Mac OS® and AppleTalk® are registered trademarks of Apple Computer, Inc. Adobe® and PostScript® are trademarks of Adobe Systems, Inc. PCL® is a registered trademark of Hewlett-Packard Company. RPCS™ is a trademark of Ricoh Company, Ltd. All other trademarks are the property of their respective owners. Product specifications subject to change without notice. Print speeds may be impacted by network, application or PC performance. Products are shown with optional features.

♻️ Printed in U.S.A. on recycled paper. (S2118) 30M 6/05